

C INSTRUMENTS

BLUES IN B \flat - SLOW

TAKE THE FIRST ENDING 6 TIMES

7TH TIME TAKE SECOND ENDING OUT

(PLAY 7 TIMES)

B \flat 7

E \flat 7

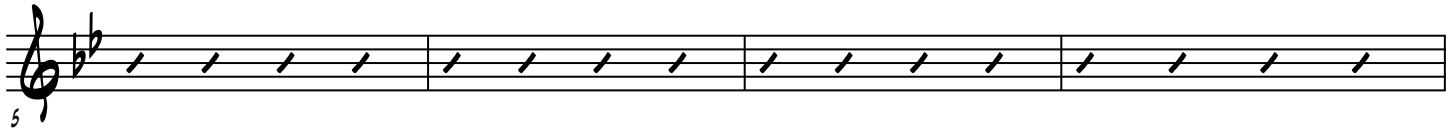
B \flat 7



E \flat 7

B \flat 7

G7



C-7

F7

B \flat 7

G7

C7

F7



B \flat

B \flat /D

E \flat 7

E $^{\circ}$

B \flat /F

B7

B \flat 7

