

BLUES IN F - MEDIUM

C INSTRUMENTS

(PLAY 13 TIMES)

FMA^b7

E-7(b⁹)

A7

D-7

G7

C-7

F7



B^bMA^b7

B^b-7

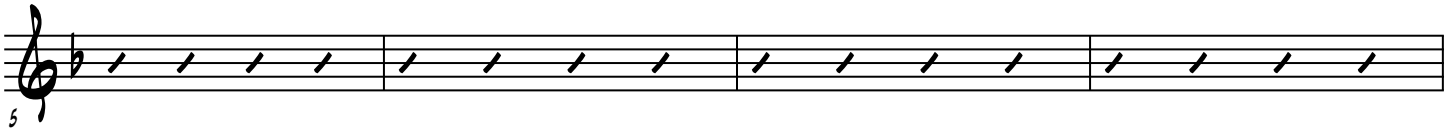
E^b7

A-7

D7

A^b-7

D^b7



G-7

C7

FMA^b7

D7

G-7

C7

FMA^b7
(LAST X ONLY)

