

MODES of Melodic Minor w mixob6 subs

(Even 8ths)

Practice

$\left\{ \begin{array}{c} C_{-\Delta 7} \\ \text{Mixolydian } b6 \text{ from the 5th} \end{array} \right\}$

$\left\{ \begin{array}{c} D_{7b9} \\ \text{Mixolydian } b6 \text{ from the 4th or Minor } b5 \text{ from the 5th} \end{array} \right\}$

$\left\{ \begin{array}{c} E^b_{\Delta 7\#5} \\ \text{Mixolydian } b6 \text{ from the 3rd} \end{array} \right\}$

$\left\{ \begin{array}{c} F_{7\#11} \\ \text{Lydian-dominant: Get comfortable in root position} \end{array} \right\}$

$\left\{ \begin{array}{c} G_{7b13} \\ \text{Mixolydian } b6 \text{ from the root} \end{array} \right\}$

$\left\{ \begin{array}{c} A_{\emptyset 7} \\ \text{half-diminished: get comfortable in root position} \end{array} \right\}$

$\left\{ \begin{array}{c} B_{7ALT} \\ \text{Make the root of } B7alt, \text{ your 3rd of mixo } b6 \end{array} \right\}$

Melodic Minor Modes

Melodic minor

C-(Δ7)



Dorian b9

D7(b9sus4)



Lydian augmented

E^bΔ7(#5)



Lydian dominant

F7(#11)



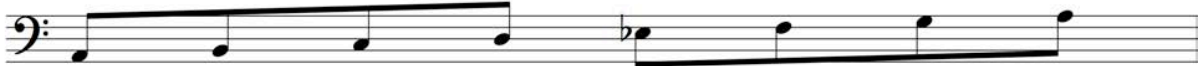
Mixolydian b6

G7(b13)



Half-diminished or Locrian (natural 2)

A^ø7



Altered or super Locrian

B⁷alt.

