

# Lock and Key

Bass

Greg Goebel

Intro (*rubato*)

Bbm<sup>11</sup> Abm<sup>9</sup>/Db Bbm<sup>11</sup> Abm<sup>9</sup>/Db Bbm<sup>11</sup> Abm<sup>9</sup>/Db Bbm<sup>11</sup> Em<sup>11</sup>/A

9 1. piano 2. add drums 3. add bass

13 Abm<sup>9</sup> Emaj7(#11) Abm<sup>9</sup> Emaj7(#11) Abm<sup>9</sup> Emaj7(#11) Abm<sup>9</sup> Gb<sup>6</sup>

17 add guitar

21 Piano melody

29 add guitar

33

37 Abm<sup>9</sup> Emaj7(#11) Abm<sup>9</sup> Emaj7(#11) Abm<sup>9</sup> Emaj7(#11) Abm<sup>9</sup> Gb<sup>6</sup>

41 Ebm Bbm<sup>7</sup> A<sup>13</sup>

45 Abm<sup>9</sup> Db/F Db/F Emaj7

49 Ebm Bbm<sup>7</sup> A<sup>13</sup>(b9)

2 53 Abm7 C7alt. Bm11 Eb7alt. Em11 E/C C/Ab B/G



57 *Piano melody*



65 *add guitar*

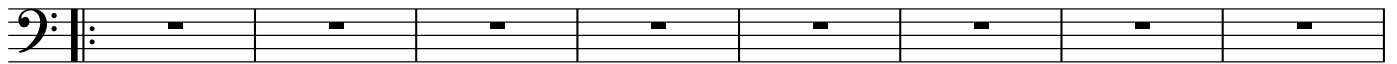


73 Abm9 Emaj7(#11) Abm9 Emaj7(#11) Abm9 Emaj7(#11) Abm9 Gb6

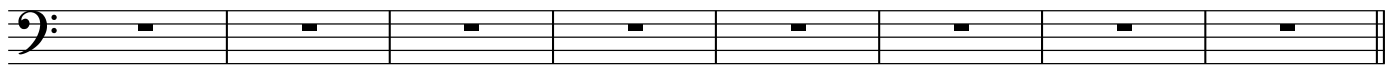


*Solos*

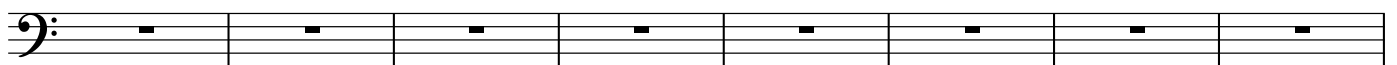
81 Emaj9(#11) Ebm9 Bmaj7 Bbm7



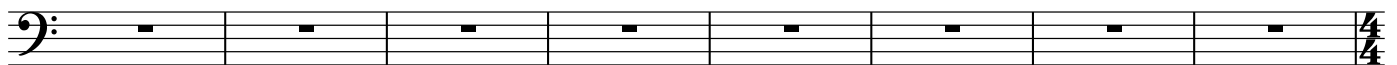
89 Abm9/Db Em9/A Abm9/Db Gm9/C



97 Emaj9(#11) Ebm11 Db(add2)/F Dmaj7(#11)



105 Cm11 Eb/B Bbm11 Db/A Abm9/Db Gm9/C B/G



113 Abm9 Emaj7(#11) Abm9 Emaj7(#11) Abm9 Emaj7(#11) Abm9 Gb6



117 Abm9 Emaj7(#11) Abm9 Emaj7(#11) Abm9 Emaj7(#11) Abm9 Gb6



121 Ebm Bbm7 A13

125 Abm9 Db/F Db/F Emaj7

129 Ebm Bbm7 A13(b9)

133 Abm7 C7alt. Bm11 Eb7alt. Em11 E/C C/Ab B/G

137 add guitar

141

145

149 *tr*

153 Bbm11 Abm9/Db Bbm11 Abm9/Db Bbm11 Abm9/Db Bbm11 Em11/A

*♩*=155 open vamp

161 Bbm7 Abm9/Db B13(sus4) Bbm7 Abm9/Db

165 Bbm7 Abm9/Db B13(sus4) Bbm7 Abm9/Db Em9/A