

# STRAIGHT-8THS SUS BLUES

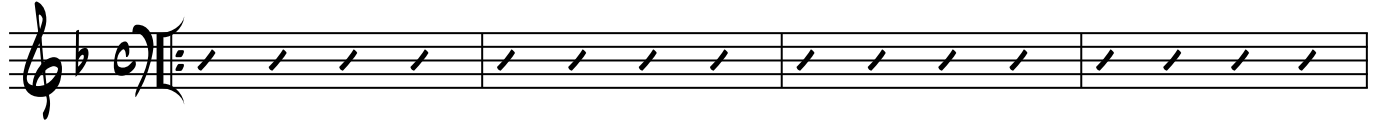
C INSTRUMENTS

(PLAY 10 TIMES)

F7sus4

B<sup>b</sup>7sus4

F7sus4



B<sup>b</sup>7sus4

F7sus4



C7sus4

B<sup>b</sup>7sus4

A<sup>b</sup>7sus4

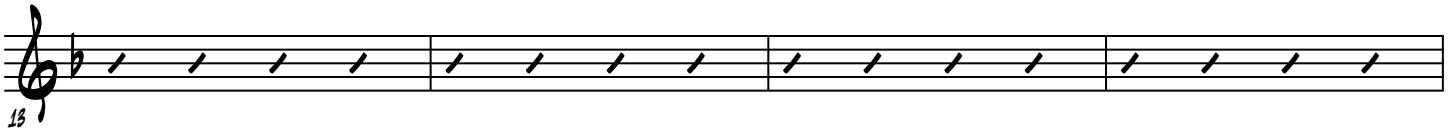
AFTER 10TH X, GO ON



C7sus4

B<sup>b</sup>7sus4

A<sup>b</sup>7sus4



C7sus4

B<sup>b</sup>7sus4

A<sup>b</sup>7sus4

