

EBONY JAM

8 BAR DRUM INTRO



A C7



1.

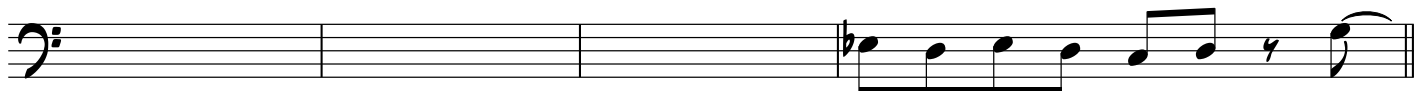
2.



F7



C7



B G7

F7



Eb7

B7



C

1 2 3

4

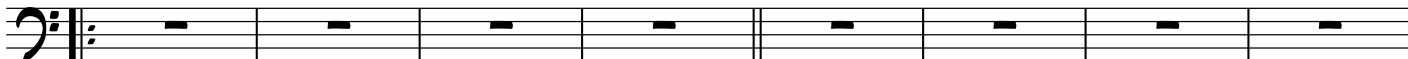


1= SAX, 2= TRMPT, 3= GTR, 4= KEYS

SOLOS: 1, 2, 3



C7



D7

G7

A^b-7

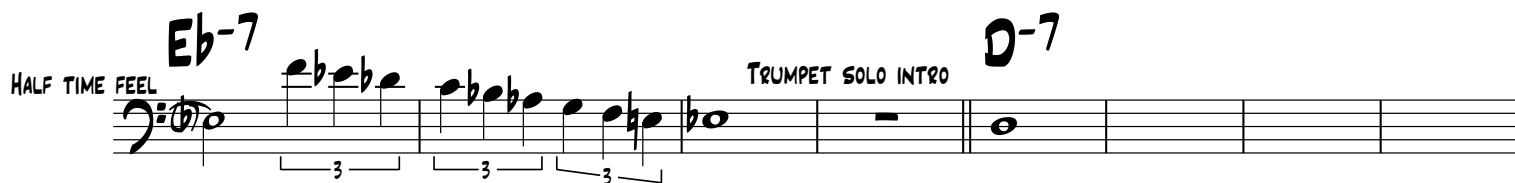
D^b7



BETWEEN SOLOS



DSS AL CODA



E^b-7

D-7

TRUMPET SOLO INTRO

E-7

F#7



DS

FOR TRUMPET SOLO

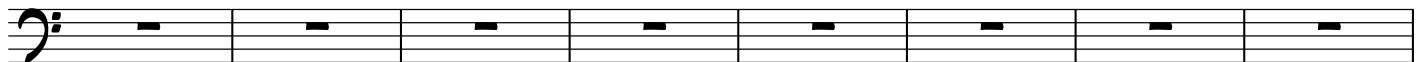
SOLO 3 ENDING



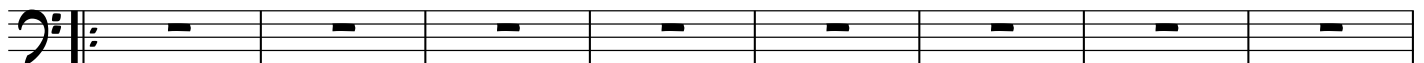
KEYBOARD SOLO BREAK



F7



C7

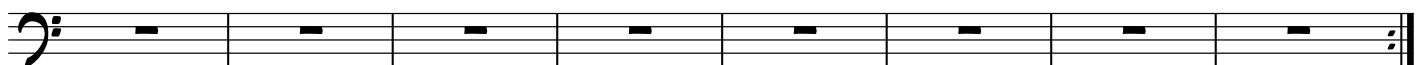


D7

G7

Ab-7

Db7



DC AL CODA



(4X)

DRUM FILL

G-11

A7(#11)

GbΔ7/Ab

