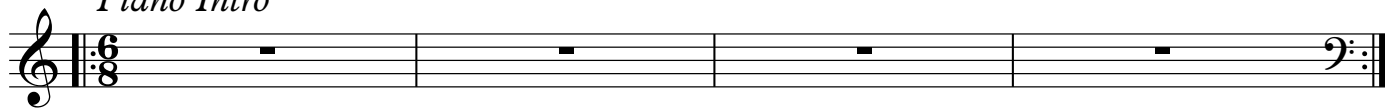


Wayfarer

Bass

Greg Goebel

Piano Intro



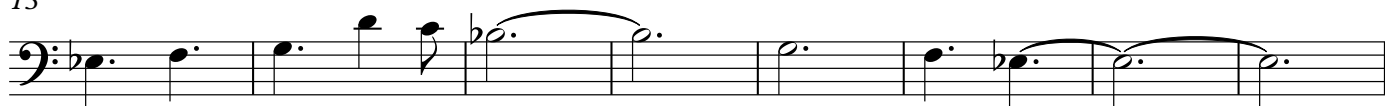
Four measures of a piano introduction in 6/8 time, consisting of whole rests on a bass clef staff.

5 *Bass Melody*



Measures 5-8 of the bass melody in 6/8 time, featuring a series of eighth notes with slurs and a final half note.

13



Measures 13-16 of the bass melody, continuing the melodic line with slurs and a final half note.

21



Measures 21-24 of the bass melody, featuring eighth notes and slurs.

29




Measures 29-32 of the bass melody, ending with a treble clef and a 3/4 time signature.

33 *4X 1,2-piano 3-bass 4-drums*



Measures 33-36 of the 4X section in 3/4 time, featuring a rhythmic pattern of eighth notes.

37 



Measures 37-44 of the X section, featuring a rhythmic pattern of eighth notes and a final measure with a double bar line and a slash.

45



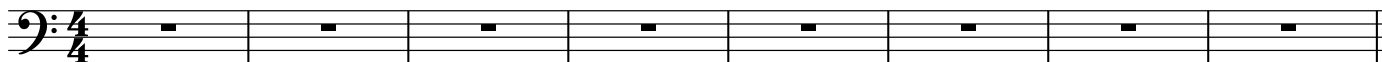
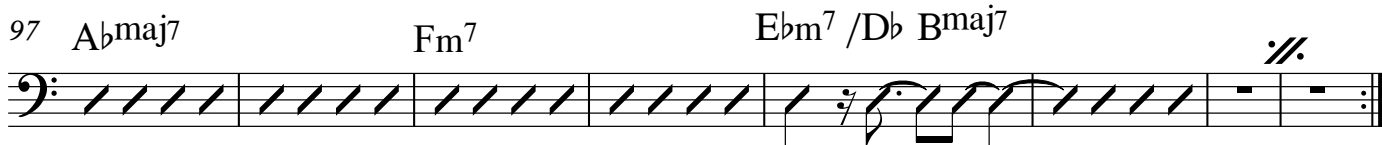
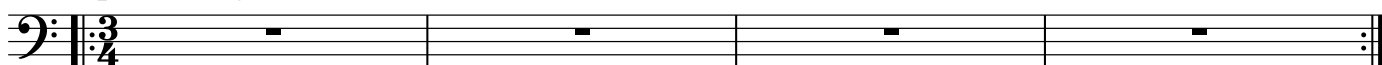
Measures 45-52 of the X section, featuring a rhythmic pattern of eighth notes and a final measure with a double bar line and a slash.

53



Measures 53-60 of the X section, featuring a rhythmic pattern of eighth notes and a final measure with a double bar line, a slash, and a circled cross symbol.

61

*Guitar Solo (open)*81 *Piano Interlude**Piano Solo (open)**On Cue*109 *piano only*

113

Musical notation for measures 113-116, featuring a bass clef and a series of eighth and sixteenth notes with various accidentals.

117

Musical notation for measures 117-120, continuing the melodic line with eighth and sixteenth notes.

121

Musical notation for measures 121-124, showing a more rhythmic pattern with eighth notes and rests.

125 *Drum Solo (open)*

Musical notation for measures 125-129, including a first ending bracket labeled "open" and a second ending bracket labeled "on cue".

130 *Drum Solo cont.*

Musical notation for measures 130-134, including first and second endings for the drum solo.

135 *Drum Solo cont. (open)*

Musical notation for measures 135-141, ending with a double bar line and a repeat sign.

on cue: D.S. al Coda



139

Musical notation for measures 139-141, starting with a 11/16 time signature and a bass clef.

142

Musical notation for measures 142-144, featuring a 6/16 time signature and a bass clef.