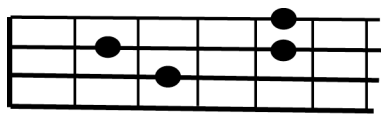


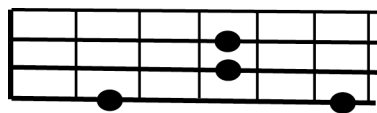
# Triads, One Octave

mollerup

*Major, Root position*



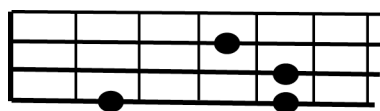
"guitar"



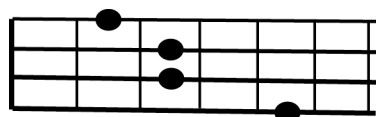
"extension"



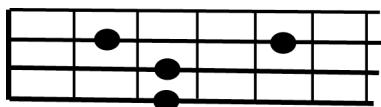
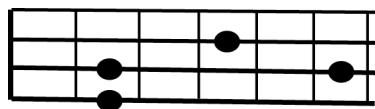
*Major, 1st inversion*



2 options:



2

25 *Major, 2nd inversion**"guitar"**"extension"*

29



33



37 *Minor, Root position*

Exercise 37 is in bass clef, 4/4 time, and D minor. The notation shows a sequence of eighth-note chords: Dm (D-F-A), Dm (D-F-A), Dm (D-F-A), Dm (D-F-A), Dm (D-F-A), Dm (D-F-A), Dm (D-F-A), Dm (D-F-A). Below the notation are two guitar diagrams. The first, labeled "guitar", shows a D minor triad on the 5th fret: D (5th string, 5th fret), F (4th string, 5th fret), and A (3rd string, 5th fret). The second, labeled "extension", shows a D minor triad on the 5th fret with an added A (3rd string, 5th fret) and a D (1st string, 5th fret).

41

Exercise 41 is in bass clef, 4/4 time, and D minor. The notation shows a sequence of eighth-note chords: Dm (D-F-A), Dm (D-F-A), Dm (D-F-A), Dm (D-F-A), Dm (D-F-A), Dm (D-F-A), Dm (D-F-A), Dm (D-F-A).

45

Exercise 45 is in bass clef, 4/4 time, and D minor. The notation shows a sequence of eighth-note chords: Dm (D-F-A), Dm (D-F-A), Dm (D-F-A), Dm (D-F-A), Dm (D-F-A), Dm (D-F-A), Dm (D-F-A), Dm (D-F-A).

49 *Minor, 1st inversion*

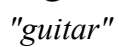
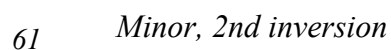
Exercise 49 is in bass clef, 4/4 time, and D minor. The notation shows a sequence of eighth-note chords: Dm (D-F-A), Dm (D-F-A), Dm (D-F-A), Dm (D-F-A), Dm (D-F-A), Dm (D-F-A), Dm (D-F-A), Dm (D-F-A). Below the notation are two guitar diagrams. The first, labeled "guitar", shows a D minor triad on the 5th fret: D (5th string, 5th fret), F (4th string, 5th fret), and A (3rd string, 5th fret). The second, labeled "extension", shows a D minor triad on the 5th fret with an added A (3rd string, 5th fret) and a D (1st string, 5th fret).

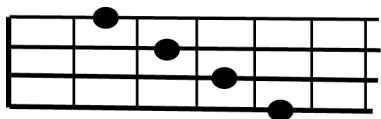
51

Exercise 51 is in bass clef, 4/4 time, and D minor. The notation shows a sequence of eighth-note chords: Dm (D-F-A), Dm (D-F-A), Dm (D-F-A), Dm (D-F-A), Dm (D-F-A), Dm (D-F-A), Dm (D-F-A), Dm (D-F-A).

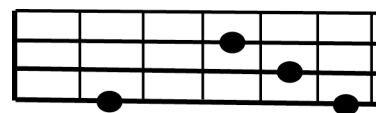
53

Exercise 53 is in bass clef, 4/4 time, and D minor. The notation shows a sequence of eighth-note chords: Dm (D-F-A), Dm (D-F-A), Dm (D-F-A), Dm (D-F-A), Dm (D-F-A), Dm (D-F-A), Dm (D-F-A), Dm (D-F-A).



73 *Augmented, Root position*

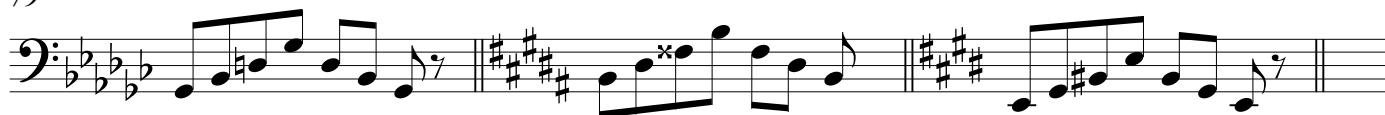
4 Options:



## 76



## 79



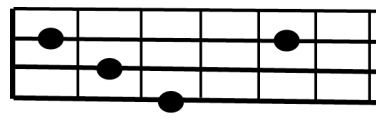
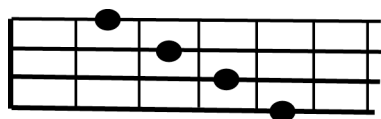
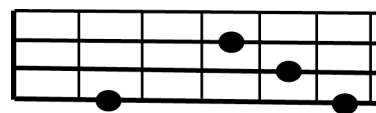
## 82



6

*Augmented, 1st inversion*

85

*4 Options:*

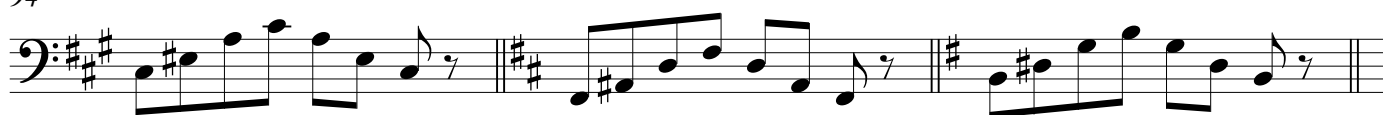
88



91

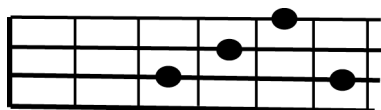


94



97 *Augmented, 2nd inversion*



109 *Diminished, Root position**"guitar"**"extension"*

113



117

121 *Diminished, 1st inversion**"guitar"**"extension"*

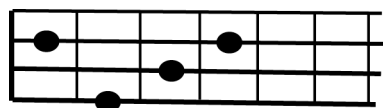
125



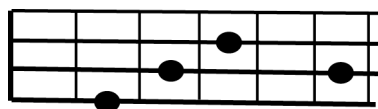
129





133 *Diminished, 2nd inversion*

"guitar"



"extension"

## 137



## 141

