

MATT GARRISON LIVE EXAMPLES

EX. 1 "FAMILY"

5:38-5:48

$A\flat 7(\#11)$

Handwritten musical notation for Ex. 1 "FAMILY". The notation is written on two staves. The top staff is in treble clef and the bottom staff is in bass clef. The key signature is one flat (Bb) and the time signature is 4/4. The notation includes various musical symbols such as notes, rests, and accidentals. The piece is in the key of Bb major (F minor) and features a prominent $A\flat 7(\#11)$ chord.

EX. 2 "GROOVE TUNE"

21:55-22:01

Handwritten musical notation for Ex. 2 "GROOVE TUNE". The notation is written on two staves. The top staff is in treble clef and the bottom staff is in bass clef. The key signature is one flat (Bb) and the time signature is 4/4. The notation includes various musical symbols such as notes, rests, and accidentals. The piece is in the key of Bb major (F minor) and features a prominent $A\flat 7(\#11)$ chord. The notation is marked with measure numbers 13 and 16.

EX. 3. "DARK MATTER"

25:31-26:03

N.C.

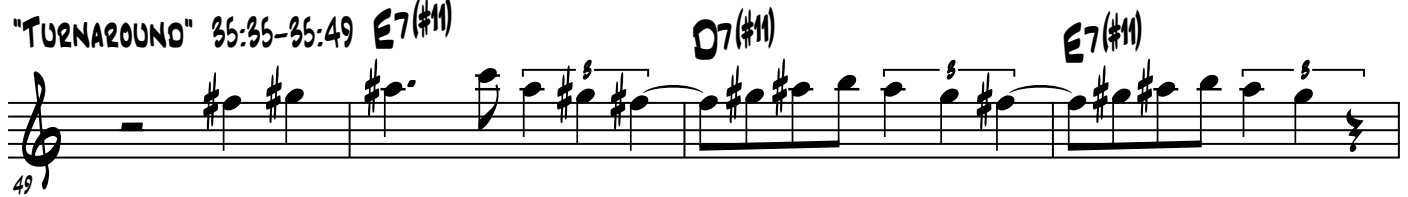
$A 7(\#9)$

Handwritten musical notation for Ex. 3 "DARK MATTER". The notation is written on three staves. The top staff is in bass clef and the bottom two staves are in bass clef. The key signature is one flat (Bb) and the time signature is 4/4. The notation includes various musical symbols such as notes, rests, and accidentals. The piece is in the key of Bb major (F minor) and features a prominent $A 7(\#9)$ chord. The notation is marked with measure numbers 23, 30, and 36.

EX. 3 CONT.



EX. 4 "TURNAROUND" 35:35-35:49 E7(#11)



EX. 5 "DUET 9/4" 38:47-38:55



EX. 6 "DUET 9/4" 43:48-44:06

